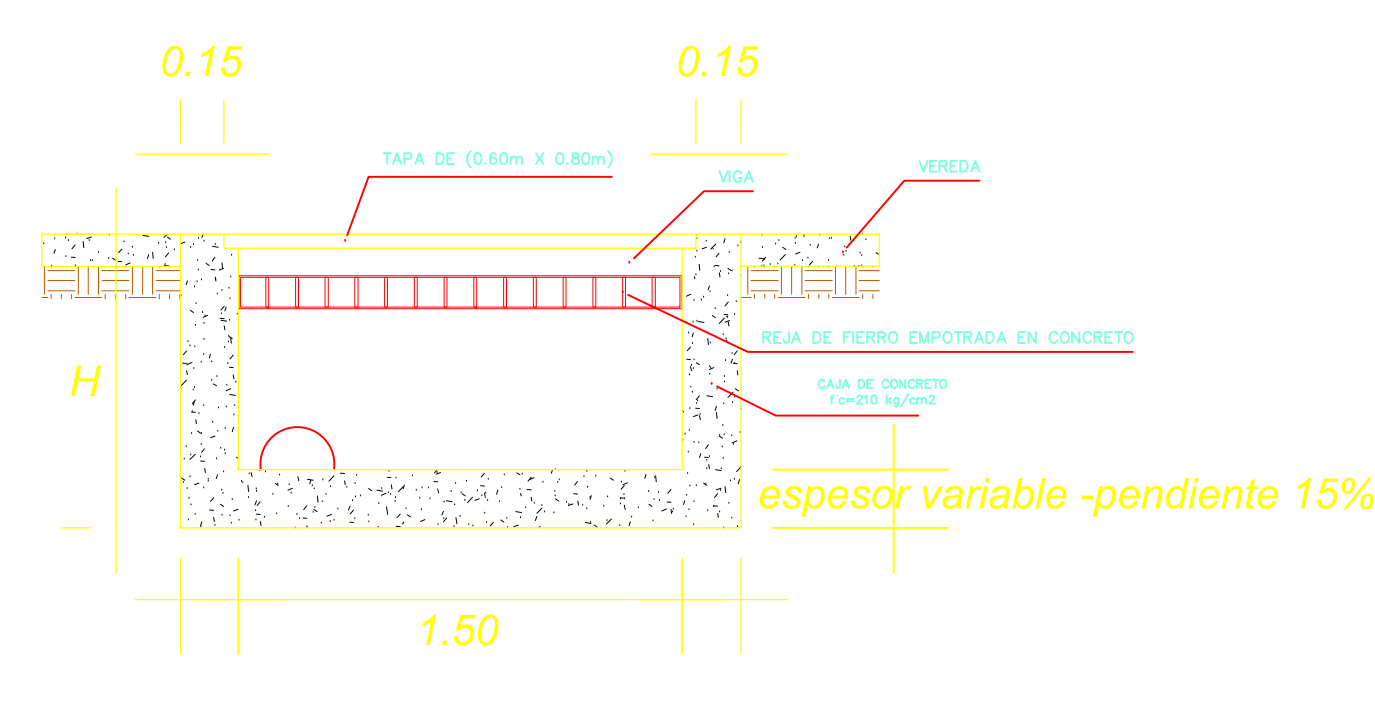
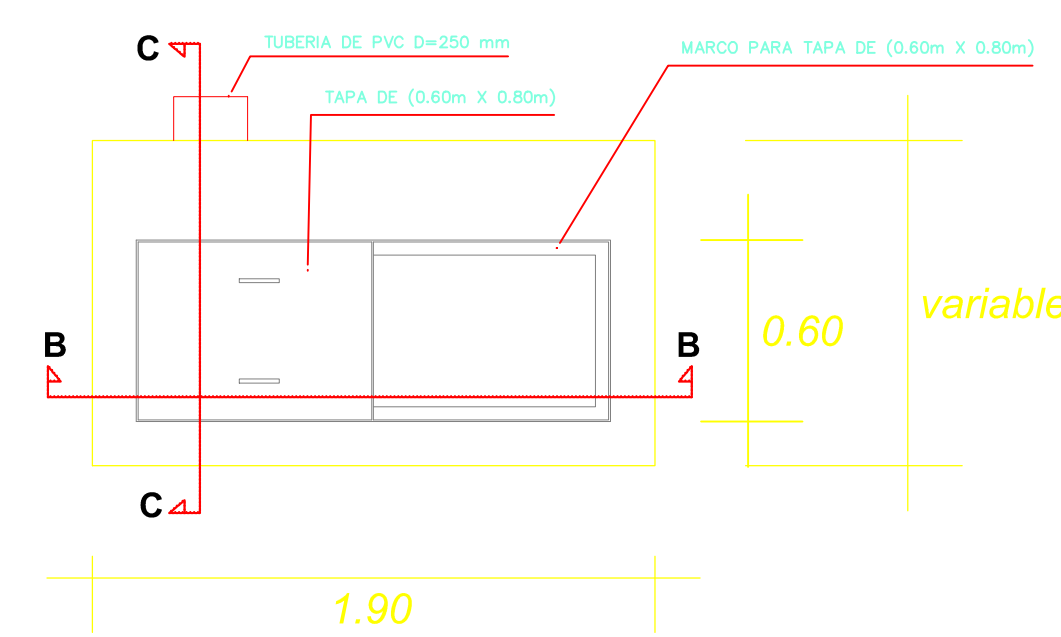


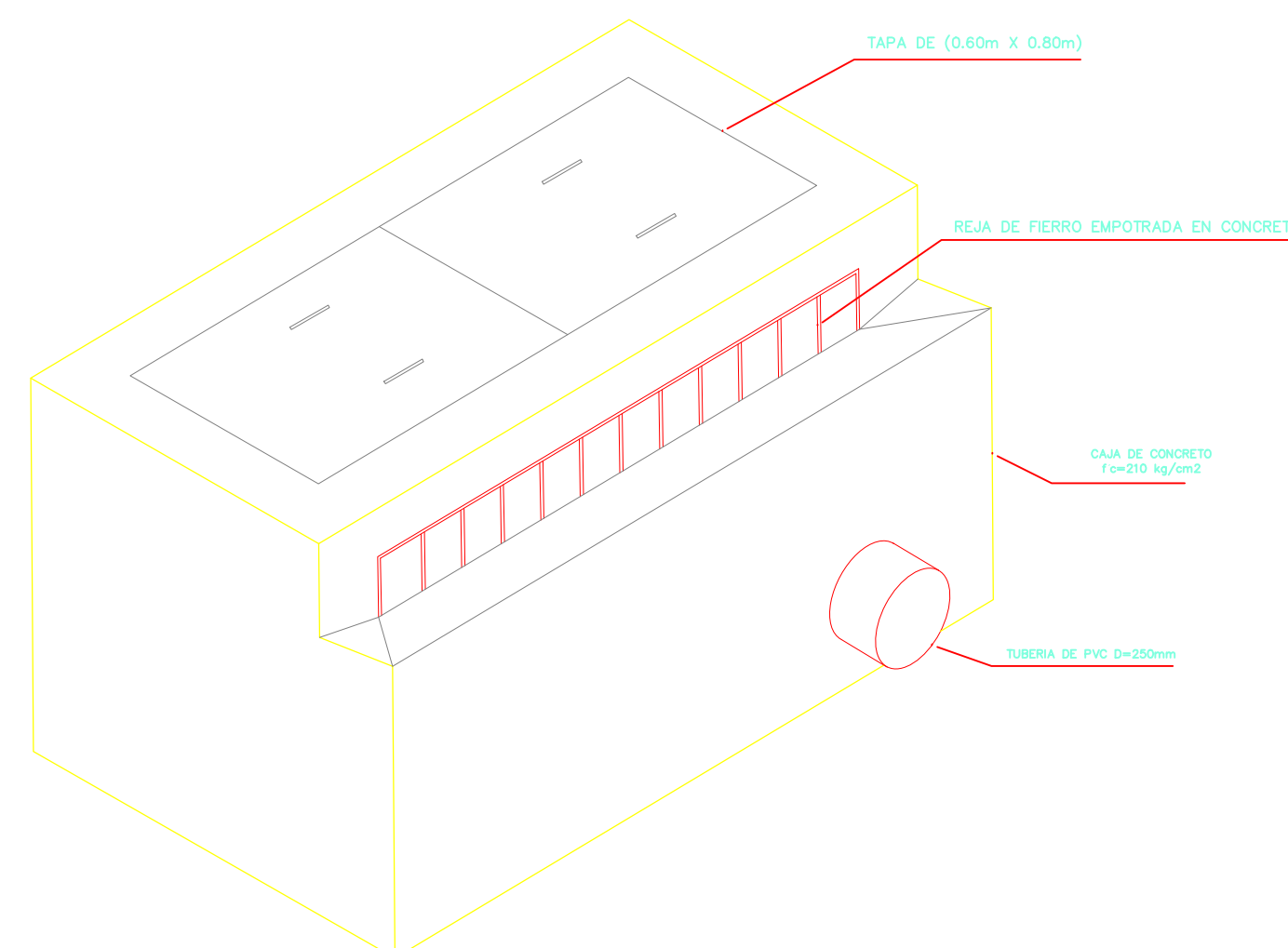
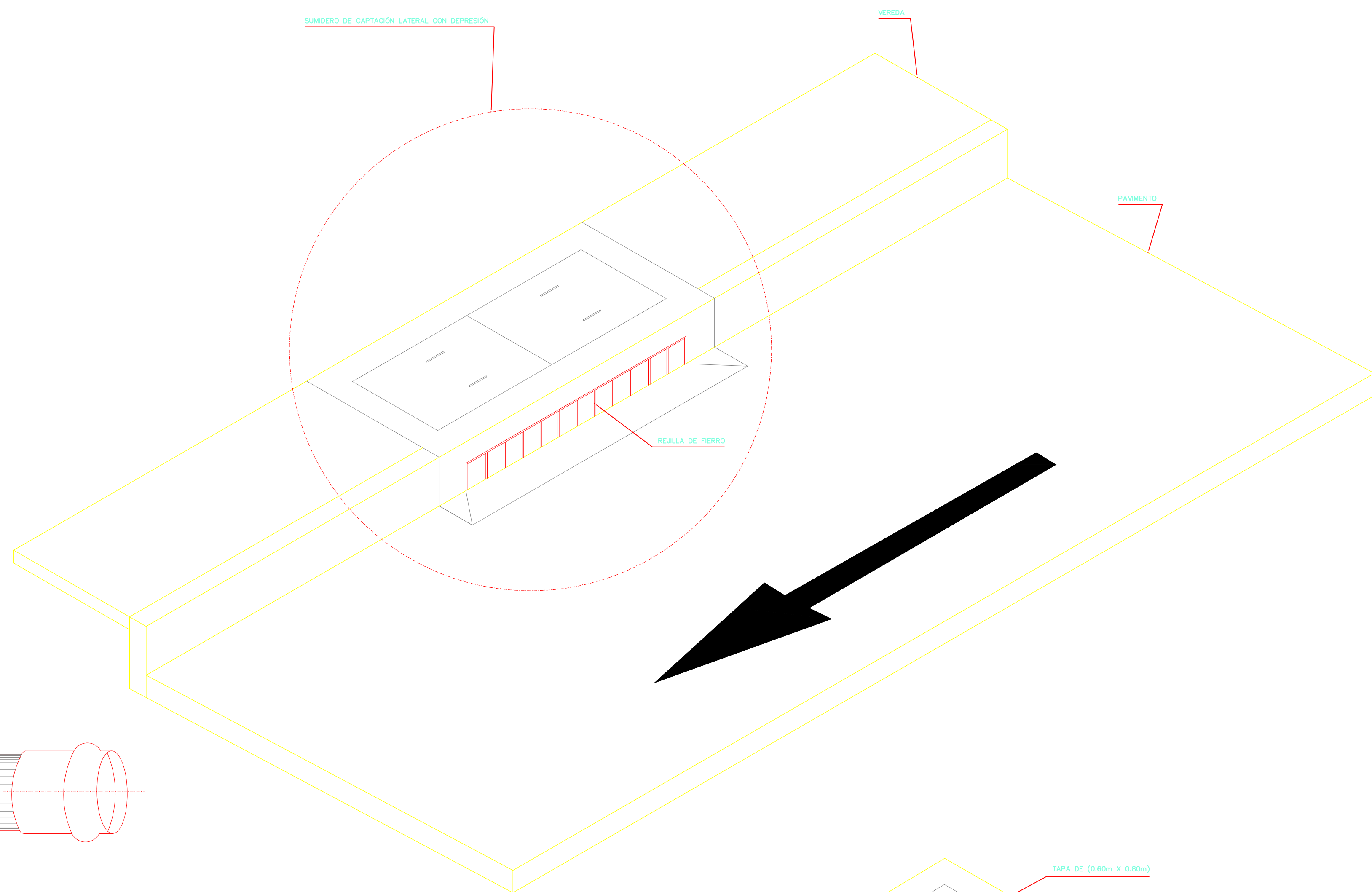
CORTE C-C
ESC: 1/25



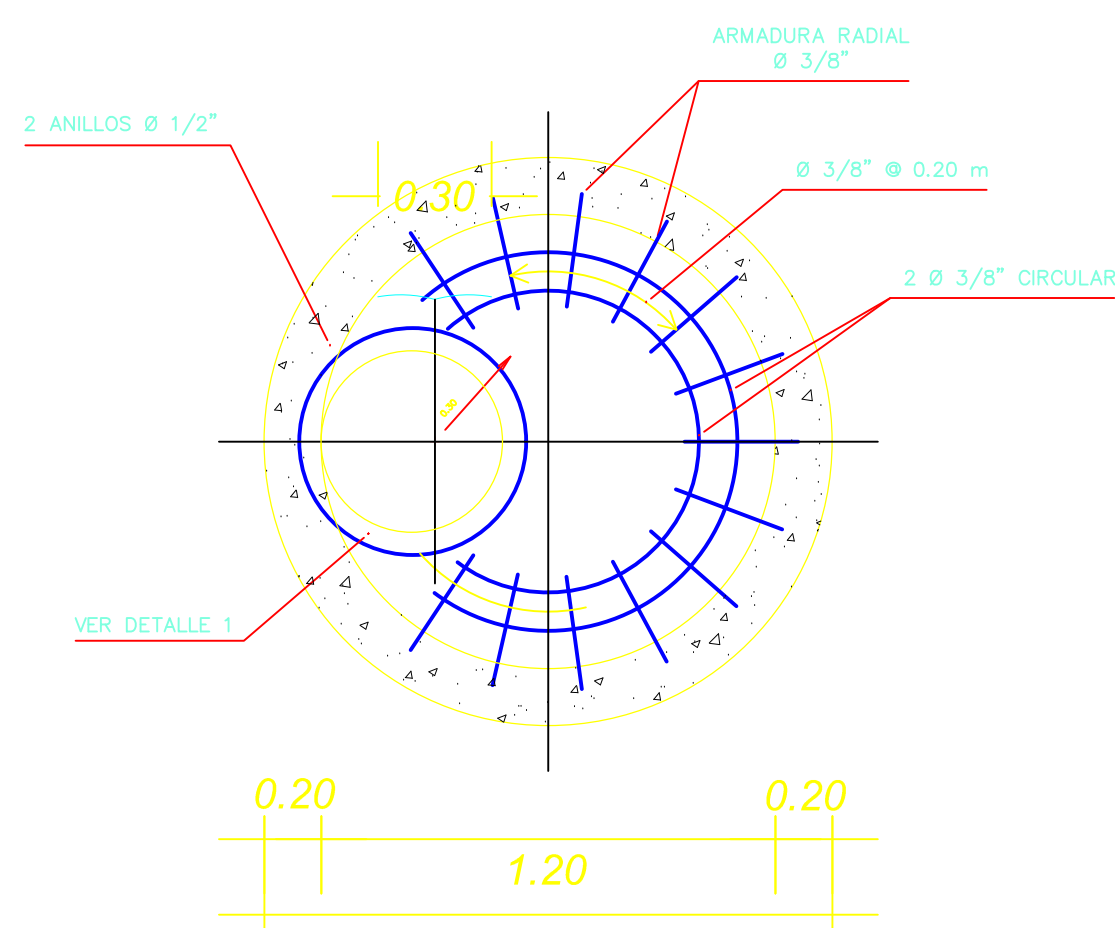
CORTE B-B
ESC: 1/25



SUMIDERO DE CAPTACION LATERAL VISTA EN PLANTA

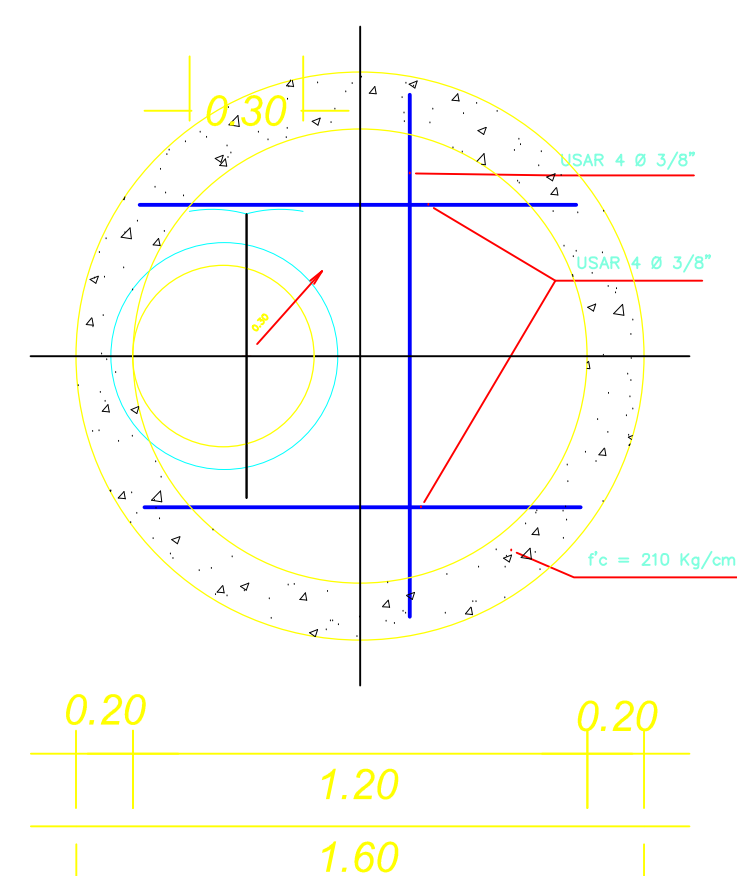


SUMIDERO DE CAPTACION LATERAL VISTA ISOMETRICA



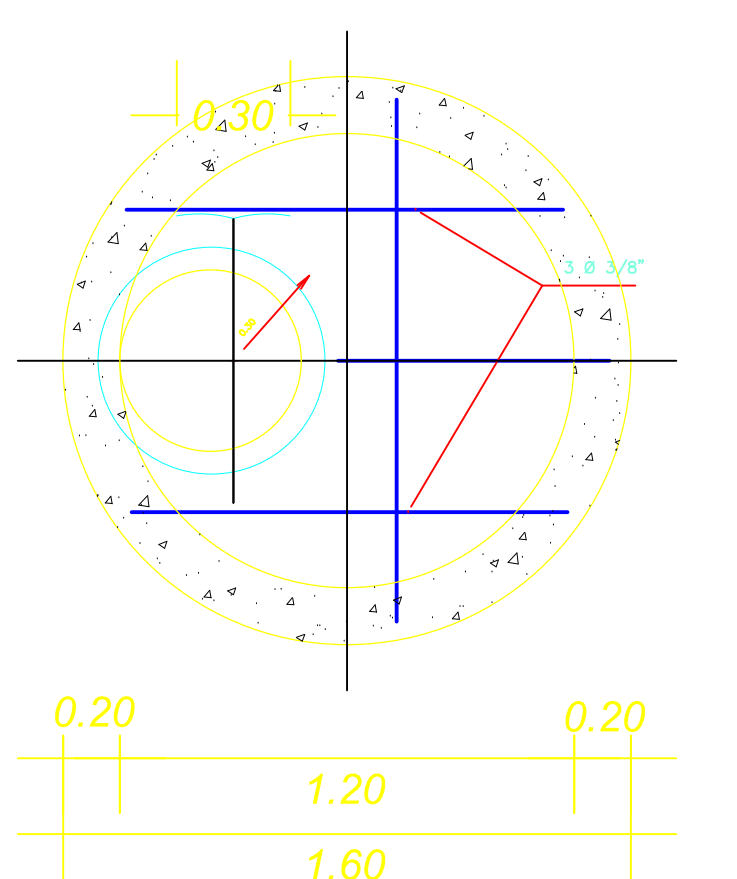
ARMADURA SUPERIOR DE LOSA DE TECHO

ESC: 1/25



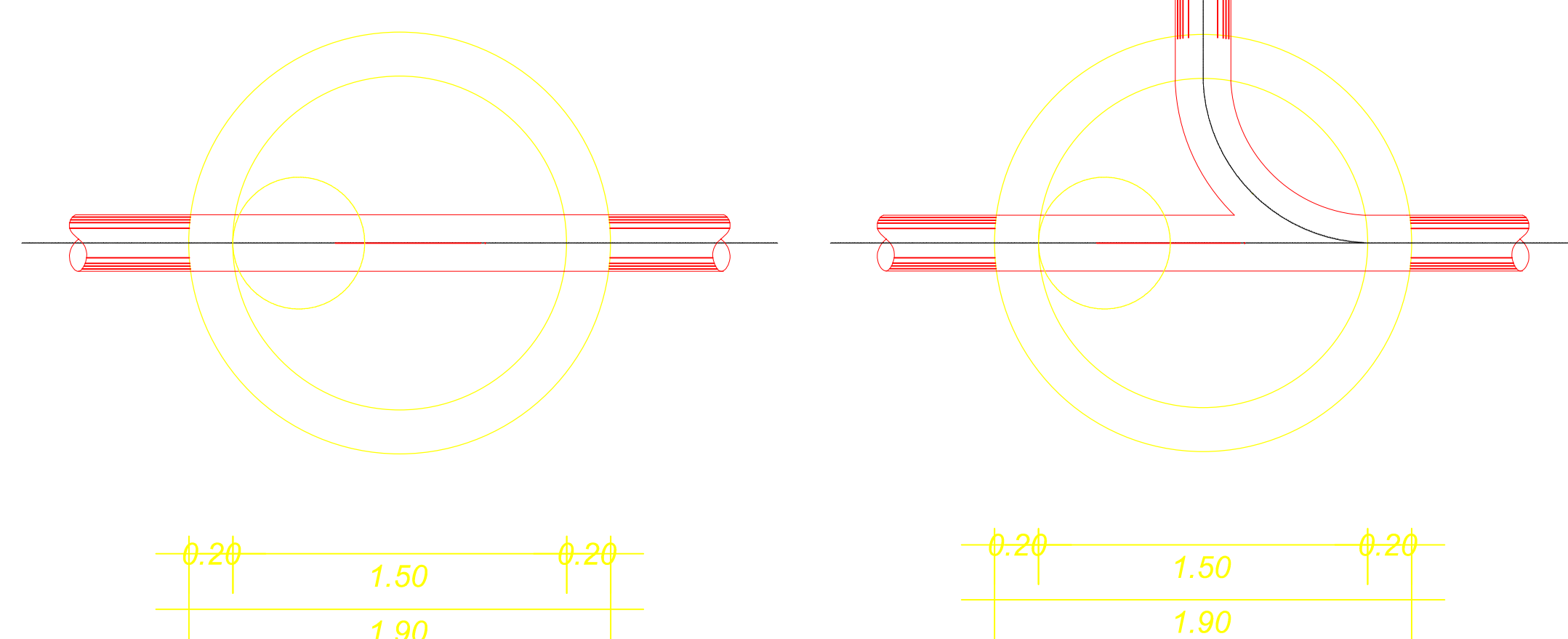
ARMADURA INFERIOR DE LOSA DE TECHO

ESC: 1/25



DETALLE 1
REFUERZO ADICIONAL EN ZONA DE INGRESO DE LOSA SUPERIOR

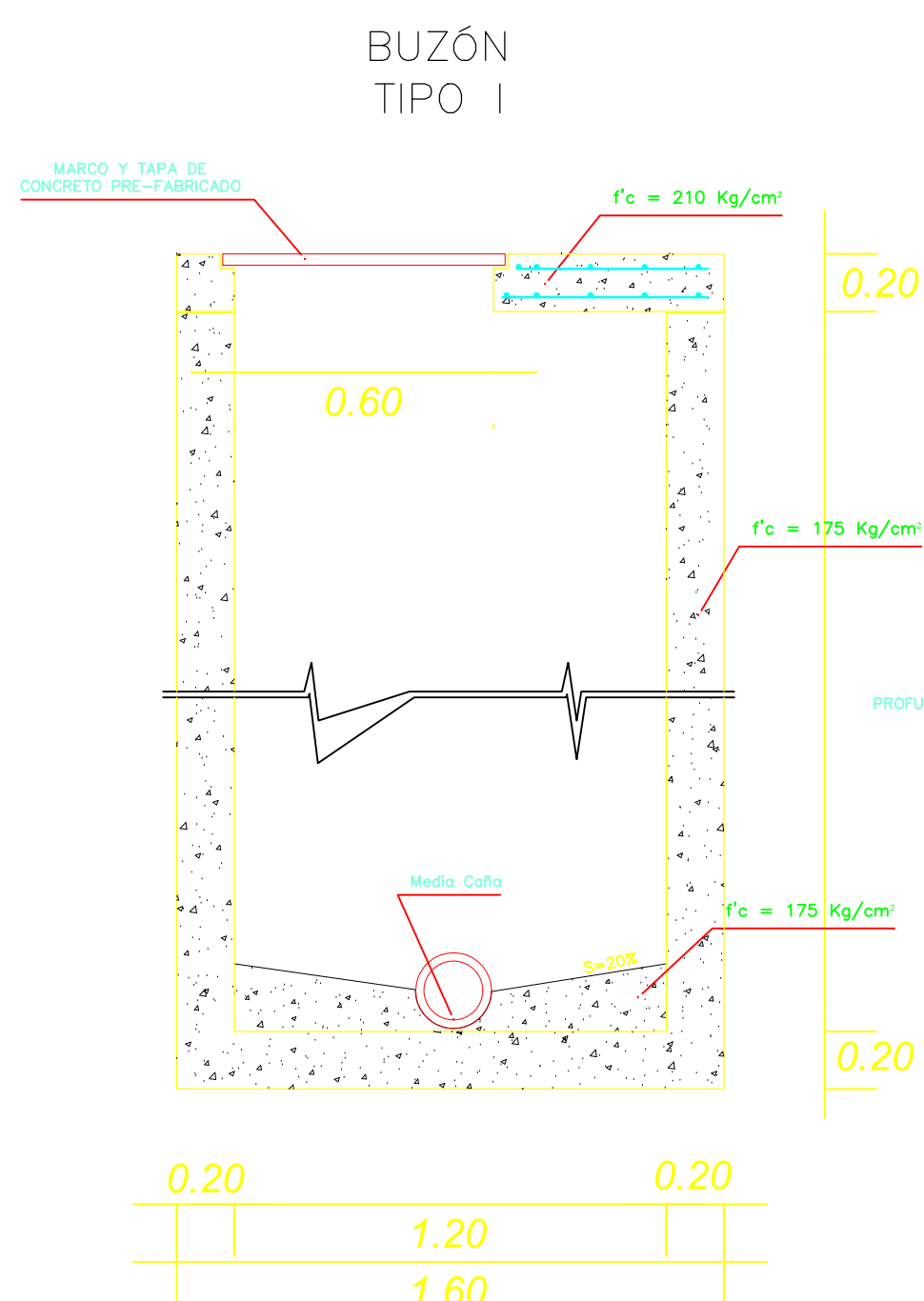
ESC: 1/25



DETALLE DE BUZONES PRINCIPALES CON ENTRADA Y SALIDAS TÍPICAS DIVERSAS 1, 2 y 3

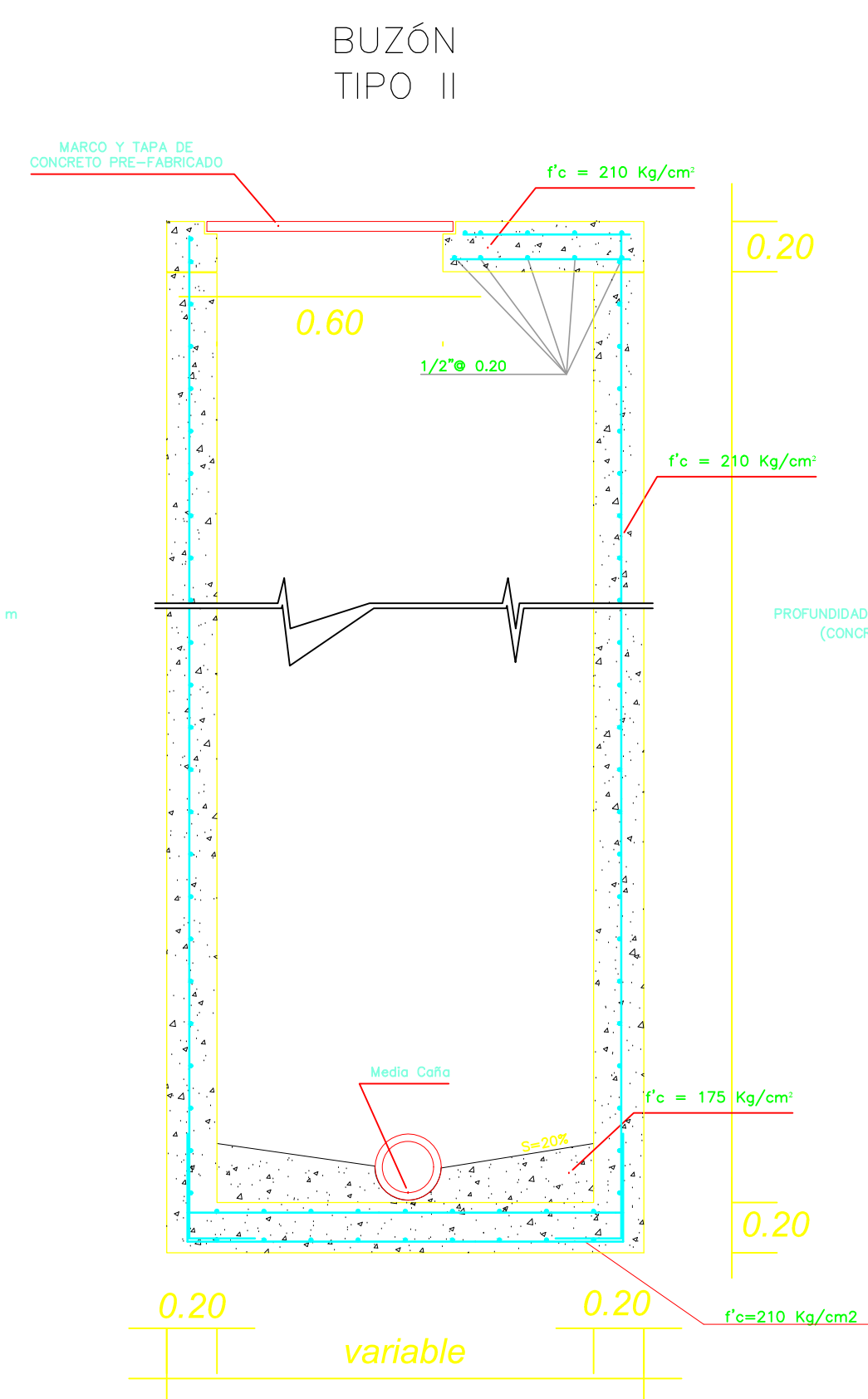
ESC: 1/25

ESC: 1/25



CORTE

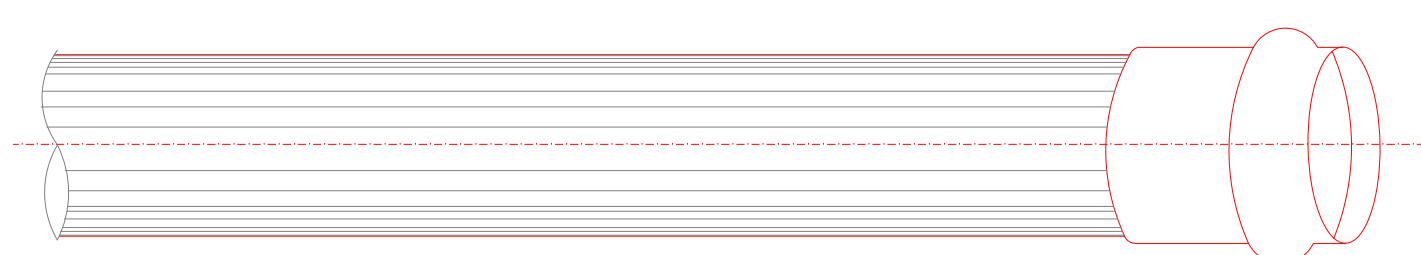
ESC: 1/25



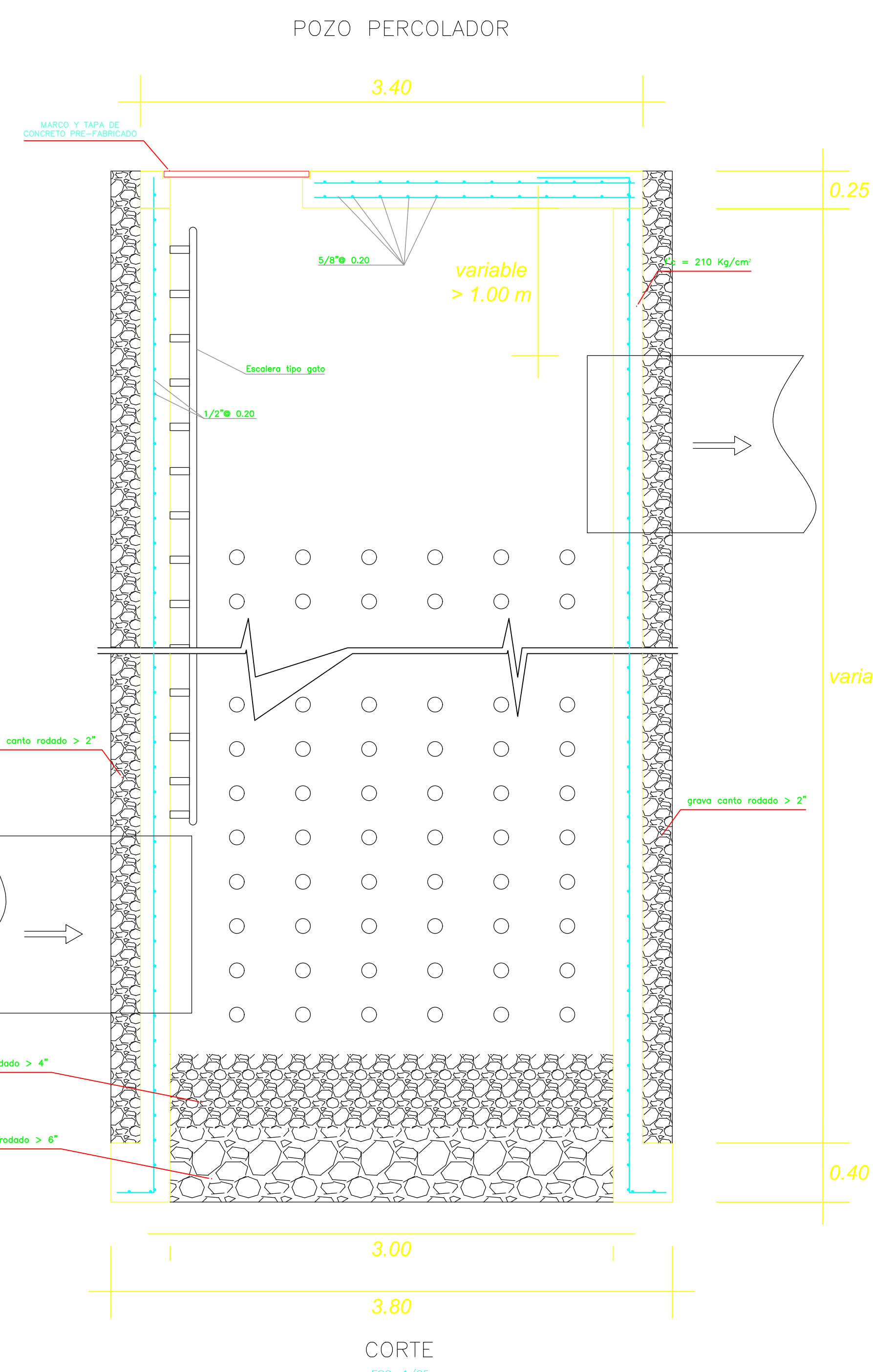
CORTE

ESC: 1/25

ESPECIFICACIONES TÉCNICAS	
CONCRETO :	$f_c = 175 \text{ Kg/cm}^2$ (C'S) $f_c = 210 \text{ Kg/cm}^2$ (C'A)
ACERO :	$f_y = 4,200 \text{ Kg/cm}^2$
RECUBRIMIENTOS :	FUSTE Y FONDO : 7.5 cm LOSAS : 3.0 cm
ESCALINES DE TUBO Y Codos DE	$1\frac{1}{2}'' \times \frac{3}{4}''$

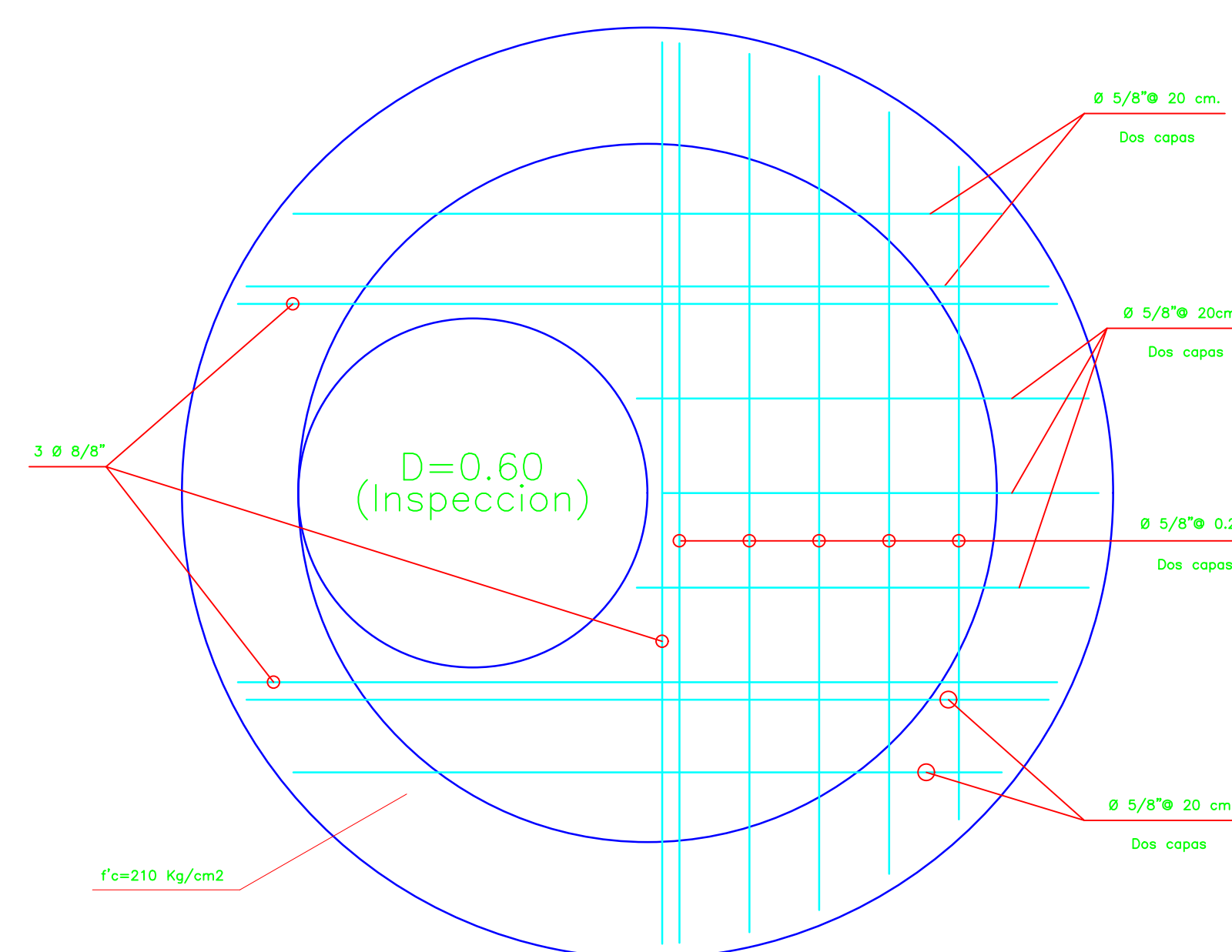


TUBERIA DE UNION FLEXIBLE



CORTE

ESC: 1/25



ARMADURA SUPERIOR LOSA DE TECHO PARA POZO PERCOLADOR